

Instruction Sheet For 3 Sided Grease Gutter

Grease Gutter Kit Includes;

2 Lower Corners. 3 Trough Lengths. 2 Corner Caps. 2 End Caps. 32 Self Tapping Screws. 1 Tube of sealer.

8 Self Tapping Corner Screws.

Pre-Installation

Make sure there are no obstructions that will be in the way of the mounting area on the duct such as electric boxes, conduits, brackets, etc. Check to be sure that the power supply conduit is in

1) Turn off power to fan (if needed). Degrease perimeter of duct where unit will be mounted. Measure all four sides of the duct and cut main trough lengths as shown.

Example: If dimension is 30", cut trough to 29 3/4".

Follow this procedure for remaining 3 sides of duct.

Note: In some low setting ventilator applications it may be necessary to trim the rear flashing of the troughs and corners using the provided casting marks as guides, to reduce the overall profile.

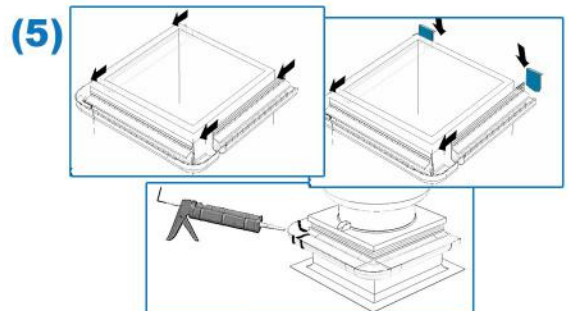
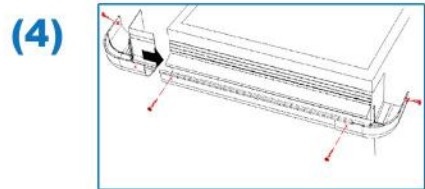
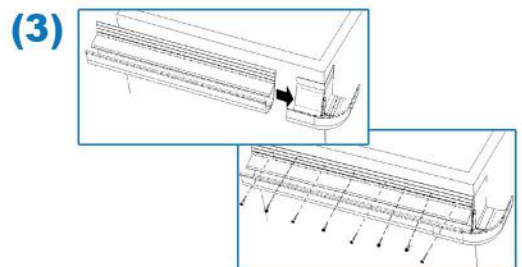
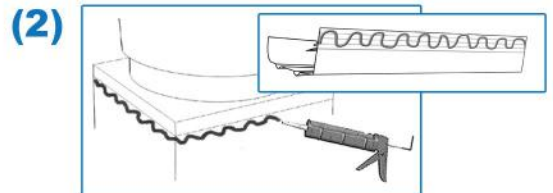
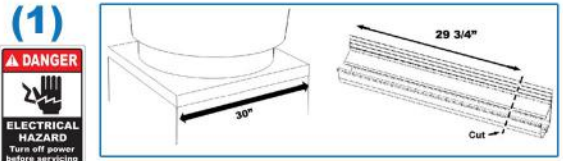
2) Apply a good coating of provided sealer on the back side of the Gutter where unit will make contact with duct. This seal between the system's flashing and the duct is VERY important for the purpose of preventing grease from seeping behind the system.

3) Position one of the lower corner pieces on the duct, making sure it is level and will not obstruct removal of fan for service, etc. Fasten the lower corner piece to the duct, as shown, using the supplied screws. For best results tuck gutter flashing up under the fan base if applicable. Slide the measured/cut section of the main trough into the receiving end of the mounted corner, stopping at the edge of the duct. When the trough is level, fasten it to the duct. Place a screw every 2 inches. Be sure to leave room on the open end for the next corner to slide on.

4) Install the next corner by sliding it behind the mounted trough. Fasten the corner the same way as in Step 3. Be sure to install an extra fastener through all the outer overlapped pieces.

5) Assemble the remaining two (2) lengths to slide into the section that is already mounted to Front of the duct. Complete the process by Attaching the End Caps and fastening the overlapped areas of the corners and troughs. Again, be sure to install an extra fastener to all overlapped pieces. There will be 2 fasteners per corner. These 4 fasteners will add to the rigidity of the overall framework.

For additional protection, once the unit is installed, you may caulk all gaps and drain holes on high discharge side of fan.



FOR TECHNICAL ASSISTANCE, CONTACT US AT:

866.704.OMNI • SALES@OMNI-SUPPLY.COM • WWW.OMNI-SUPPLY.COM
1501 COMMERCE DRIVE ELGIN, IL 60123