

## Instruction Sheet For EFI 360 (Exhaust Fan Interceptor 360) For Install on Curb and Ventilation Shaft

EFI360 Kit Includes;

Mounting Bracket. Deflection Plate. 4 Mounting screws. Lid. 4 Carriage Bolts. Box. 4 Nuts for carriage bolts. Internal Box. 2 Wing Nuts. Hose Adaptor (2 washers). Plumbing (Cleaning apparatus).

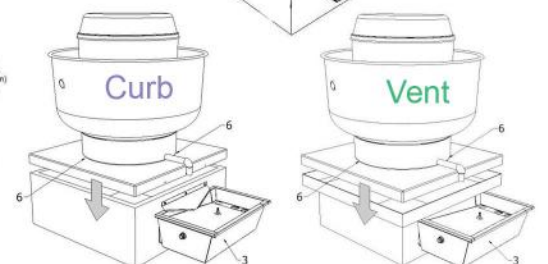
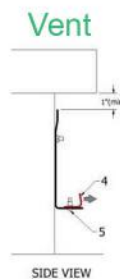
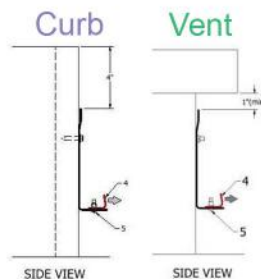
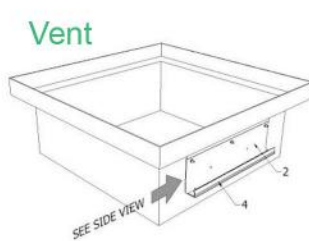
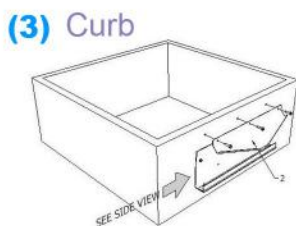
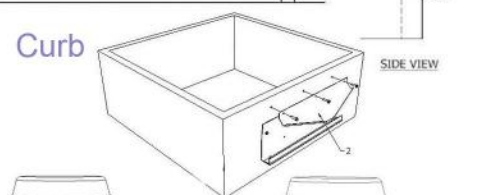
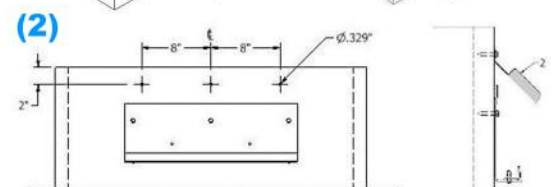
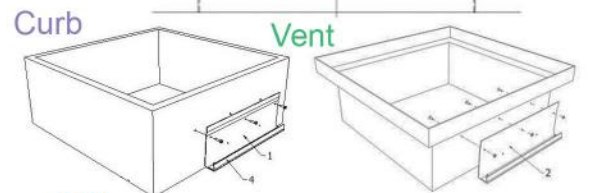
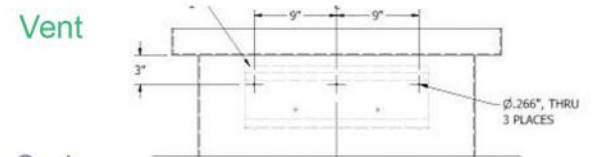
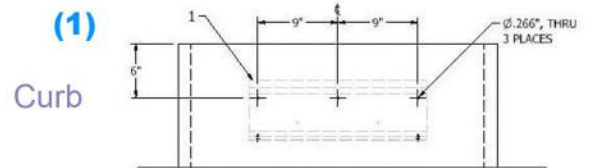
### Pre-Installation

Make sure there are no obstructions that will be in the way of the mounting area on the fan or duct such as electric boxes, conduits, brackets, etc. Check to be sure that the power supply conduit is in good condition and has adequate length for the fan to be tilted.

**1) Center and level mounting bracket under exhaust fan spout and mark mounting holes. (CURB) Install mounting bracket using included self-tapping mounting screws. Tighten screws to ensure mounting bracket is tight to the curb. (VENTILATION SHAFT) Using 1/4" drill bit – drill holes into ventilation shaft. Install mounting bracket using included carriage bolts. Ensure that the rounded head of the carriage bolts is on the inside of vent shaft! Tighten nuts on the bolts to ensure mounting bracket is tight to the ventilation shaft.**

**2. (CURB) Attach funnel under lip of fan using wood screws.**

**3. Place Interceptor on mounting bracket. Adjust mounting bracket to level interceptor. Tighten mounting bracket adjustment screws. Using approved sealant – seal the sheet metal joints on the exhaust fan.**



FOR TECHNICAL ASSISTANCE, CONTACT US AT:

866.704.OMNI • SALES@OMNI-SUPPLY.COM • WWW.OMNI-SUPPLY.COM  
1501 COMMERCE DRIVE ELGIN, IL 60123